



Southville International School and Colleges STUDENTS AND PARENTS' BULLETIN

No. 6 A.Y. 2024 - 2025

October 4, 2024



High School Monarchs Excel at Model United Nations



Southville International School and Colleges (SISC) High School students showcased their exceptional skills at two recent Model United Nations (MUN) conferences. From September 20 to 22, they participated in the MUN held at the German European School, followed by another event at the British School Manila on September 27-28. Throughout both events, our students demonstrated outstanding diplomacy, negotiation, and public speaking abilities, earning prestigious awards such as Best Delegate, Best Speaker and Honorable Mention.

These accomplishments not only highlight the students' dedication to critical thinking, global awareness, and leadership but also reinforce SISC's commitment to developing effective communicators. As a Center of Excellence in Communication, Financial Literacy, and Technology, SISC continues to nurture skills that prepare students for success on the global stage, fostering future leaders with a strong command of communication, problem-solving, and collaboration.

Vision

Southville International School and Colleges is recognized nationally and globally in the delivery of international education to develop lifelong learners, excellent in academics and values, and movers of society who will make a difference in the 21st century.



Mission

SISC is committed to develop lifelong learners who are equipped with the 5Cs (Competence, Character, Commitment to Achieve, Collaboration, Creativity, and Innovation) through data-driven and technology-enhanced educational programs to ensure student success in the 21st century.



General Assembly 1

Mateo Estanislao

Best Delegate

British School Manila MUN

General Assembly 4

Joshua Santos

Best Delegate

British School Manila MUN



Hyeyeon Shin

Honorable Mention (Security Council)

British School Manila MUN

Best Speaker

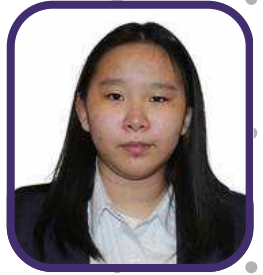
German European School Manila MUN

Economic and Social Council (ECOSOC)

Yeseo Her

Honorable Mention

British School Manila MUN



General Assembly 4

Seongmi Song

Honorable Mention

British School Manila MUN

General Assembly 6

Kenichi Maruyama

Honorable Mention

British School Manila MUN



In **Model United Nations**, the **General Assembly (GA)** is the largest body where delegates from all member states collaborate on resolutions addressing **global issues** such as **peace, security, and development**. The **Economic and Social Council (ECOSOC)** focuses on **international economic, social, and environmental cooperation and development**.

The **Security Council (SC)**, responsible for maintaining **international peace and security**, deals with more specialized topics such as **conflict resolution** and **crisis management**. It consists of fewer members, with **five permanent countries** holding veto power, and is recognized for its **dynamic, high-stakes debates**.

Welcome to the SGEN Learning Village: A Perfect Start for Your Child's Growth Journey



After School Program

We offer a variety of engaging and educational activities designed to help your child thrive. Explore our After School Program and see your child gain new skills in a fun, nurturing environment! Featured Programs include:



YOGA

MINDFUL MAKERS



ROBOTHINK PH

Register your child today and give them the chance to enjoy a fun and enriching learning experience. Don't miss out on this opportunity to help your child grow and learn in an exciting way!

88256374

SGEN Learning Village

136J Elizalde BF Homes Parañaque

At **SGEN Learning Village**, we provide a nurturing and engaging environment designed for children ages 1 to 7, where learning happens naturally through **exploration, discovery, and play**. Conveniently located at **Southville International School and Colleges, STAR Campus in BF Homes, Parañaque**, the Learning Village offers a safe and stimulating space that fosters **early cognitive development through real-world experiences**.



Backed by research from the **Center of the Developing Child at Harvard University**, our approach recognizes the **critical importance of early brain growth**. We believe that intelligence is shaped by both genetics and the environment, and we create an environment where young minds thrive. Our hands-on **learning experiences lay a strong foundation for academic success and personal growth**, ensuring your **child develops the confidence and curiosity to excel in the future**.

Discover our enriching programs at SGEN Learning Village, where your child's journey to success begins today!

Please find below the registration links for each program:

1. Yoga for Kids

Encourages mindfulness and well-being through this fun and interactive class.

Register here: <https://forms.gle/HM5RpEhmAEqoZkKW8>

2. RoboThink PH

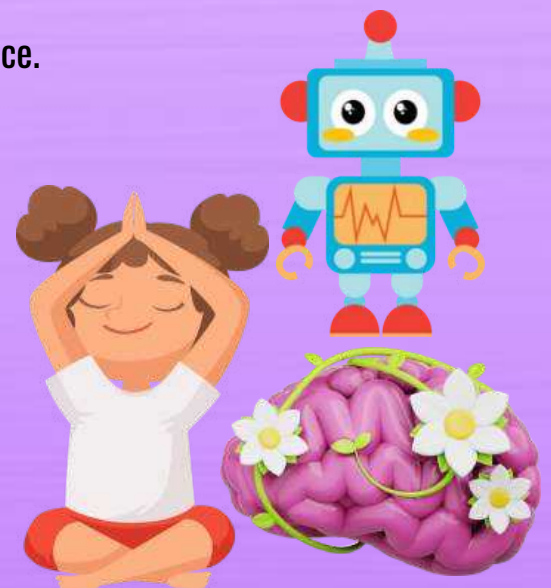
Unleash your child's creativity with our innovative robotics program, designed to spark curiosity and develop problem-solving skills.

Register here: <https://forms.gle/f2sPKgeW1RQzVjLy8>

3. Mindful Makers: Get Crafty with Science

Build with make in this STEM powered workshop for kids. Dive into the Science of Emotions. Unleash your creativity and focus where every experiment is a masterpiece.

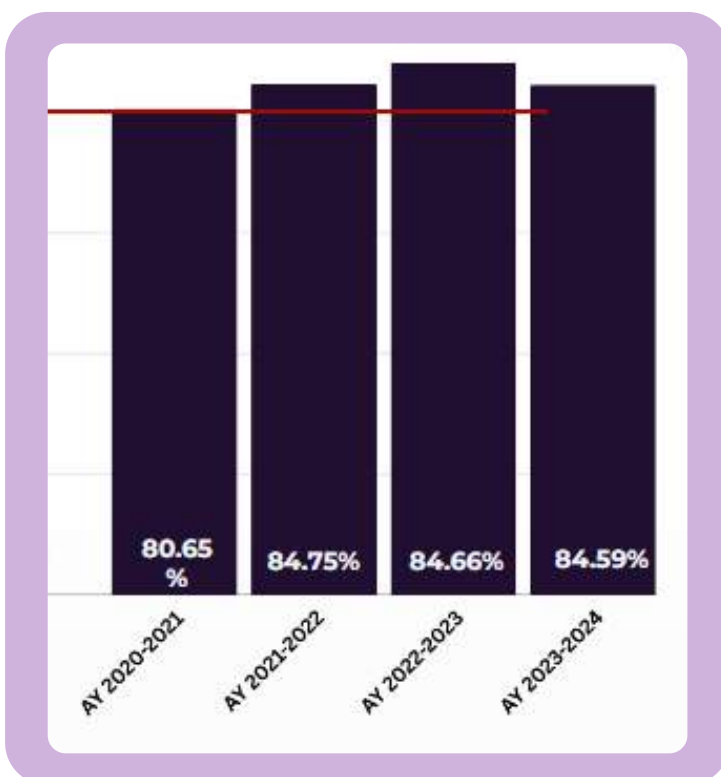
Register here: <https://forms.gle/bkk8rCps8Mw3XaQu9>



Standard-Based Assessment

The **Standard-Based Assessment (SBA)**, offered by **Asian Psychological Services and Assessment, Inc. (APSA)**, is a comprehensive external examination administered to **Southville International School and Colleges (SISC)** students. It serves two primary purposes. Firstly, it **evaluates the readiness of Senior Kinder** as they prepare to transition into a structured educational environment. Secondly, it **aligns with established educational benchmarks**, assessing students from elementary to high school levels according to both national and international standards.

Senior Kinder are assessed in English, while students from Grades 1 to 10 are evaluated in English, Math, and Science. The SBA is administered twice a year, including a pretest and a posttest. This year, the SBA Pretest is scheduled for **October 14-15**. A detailed schedule of the SBA will be given through our students' **Academic Weekly Planner of AWP**.



Consistent Upward Trend! The trend analysis of **SBA English scores** shows a steady improvement in **English language proficiency** over the years. Comparing these scores with the target score of **80**, students **surpassed** it in the **2023-2024** academic year with a score of **84.59**. This achievement highlights the success of students in meeting and exceeding their language proficiency goals.



SOUTHVILLE
GLOBAL EDUCATION NETWORK

AROUND SGEN

Issue No. 1 | October 2, 2024

City Council Honors Vallant Knights for Math, Science Excellence



Seven outstanding students from **Stonyhurst Southville International School - Batangas** were recently honored with a commendation from the **Sangguniang Panlungsod (SP)** of **Batangas City** for their remarkable achievements in international math and science competitions.

Rianne Mackenzie Antonio, Mia Lovelle Berberabe, Rodd Oneal Cabral, Raynson Skyler Katigbak, Shiv Francis Theodore Marabe, Sean Raffaele Plata, and Jem Ana Francesca Sofia Portes were recognized for their dedication, hard work, and excellence in representing the Philippines on the global stage during the event held at the **Sangguniang Panlungsod Session Hall** last **August 27, 2024**.

The commendation was sponsored by **SP Member** and proud **Alumknight Andrea Loise F. Macaraig**, who emphasized the importance of celebrating young achievers who inspire others through their perseverance and pursuit of academic excellence. The awardees were commended not only for their individual accomplishments but also for **embodying the school's commitment to nurturing competence and a growth mindset**.

Students fete mentors on World Teachers' Day

"A teacher takes a hand, opens a mind, and touches a heart."

- Author Unknown



The hard work and dedication of **Southville International School and Colleges (SISC)** teachers were acknowledged and celebrated by preschool to high school students during the school's observance of **World Teachers' Day**. The occasion was made **memorable** by a special program prepared by the students for their mentors, filled with **heartfelt messages, spirited performances, and personalized presents.**

By holding **World Teachers' Day**, SISC acknowledged its faculty as the **most important resource of the school** in its mission to **educate, inspire and empower learners** with the **competence, character, collaboration, creativity, and commitment** to achieve (5Cs) needed for success. It recognizes the tireless efforts and commitment of SISC teachers in nurturing the intellect, instilling the values, and inspiring the dreams of future movers of society.



TEACHING IS A WORK OF HEART

MONARCHS MOMENTS



STAR Campus *FunCostume Day*



First FunCostume (FunCo) Day at STAR Campus! Our preschoolers are ready to shine as they dress up every Friday for a day filled with **creativity, fun, and endless imagination!**

Munich Campus *Values Convocation*



Munich Campus students participating in a **Values Convocation**, engaging in activities led by teachers to promote **learning and teamwork.**

MONARCHS MOMENTS



Luxembourg Campus



W3 Accelerator Program

Our **SHS students** are gearing up for **real-world experiences!** They're diligently working through their **W3 (Winning the Work World) ACCELERATOR PROGRAM** modules to prepare for their **Service Learning and Immersion.** By honing their skills in their chosen strands, they're **building the confidence and expertise** needed to excel in their **future careers.**

Our **High School and SHS students** united in **compassion** to support the **fire victims in Bacoor, Cavite.** Together, they donated **food, clothes, toiletries, medicines, and cash** to help those in need. This **selfless act** showcases their **commitment** to giving back to their **community** and making a **positive impact.**



Enrollment extended for K12 FLEX, VOLT, and INNOVE Programs



EXPERIENCE THE SOUTHVILLE BRAND OF EDUCATION
whether you are in Cebu, Davao, Dubai and Worldwide.



Southville is the only Philippine institution to win the 2021 Quest for Excellence Award from GPEA. Its VOLT Program also earned a Platinum Award for International Best Practice in Australia.

Southville K12 Modes of Learning

FLEX (Asynchronous)	VOLT (Virtual Online Learning and Teaching Program- Synchronous)	INNOVE (Hybrid Set-Up)
-------------------------------	--	----------------------------------

INQUIRE NOW: 8825-6374 Local 100 | 0917-853-2450
www.southville.edu.ph | pr@southville.edu.ph

Due to requests from parents and students based abroad and in the provinces, **SISC** is **extending** its **enrollment** for the **K12 FLEX, INNOVE, and VOLT** programs until **November 2024**, subject to slot availability. The programs are designed to cater to **students living abroad** or in the **provinces**, and those with demanding schedules like **athletes, working professionals, celebrities** and others who have not yet completed their K12 education.

The **K12 FLEX Program** offers an **asynchronous learning model**, ideal for **independent learners** who need flexibility due to distance or scheduling concerns. The **INNOVE Program**, on the other hand, combines **both synchronous and asynchronous learning** to provide a **balanced and flexible approach** to education. Lastly, the **VOLT Program** is a **fully online learning experience** for students who prefer a **virtual classroom setting** with **interactive and engaging online lessons**.

Celebrate Halloween on campus

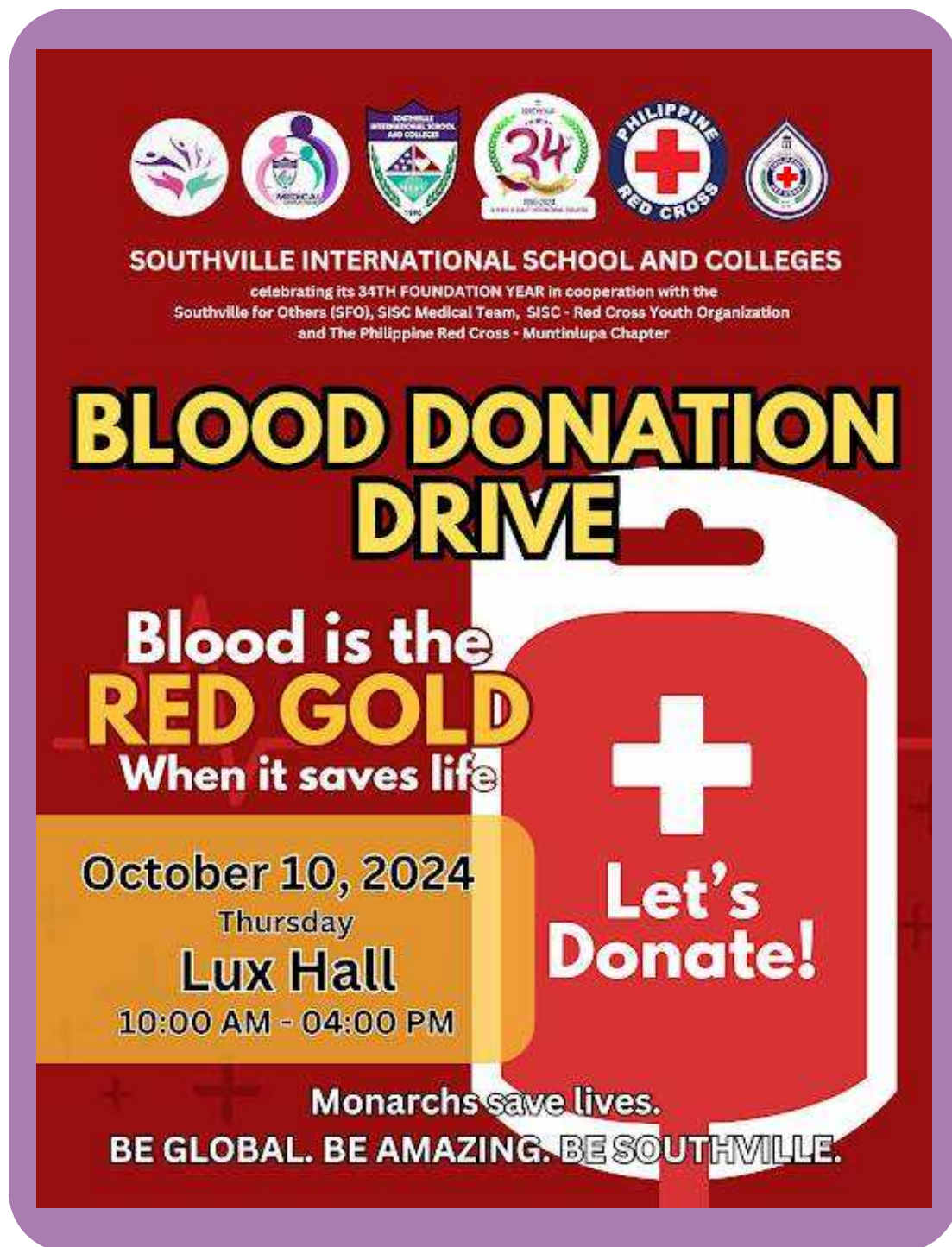


Luxembourg Campus will transform into a trick-or-treater's delight on **October 26, 2024**, with the **Sparktacular Halloween Party**. Kids from **Kinder to Grade 6** are invited to don their **spookiest costumes** and explore the campus to celebrate the **Halloween** in **SISC**. There will be games of all kinds, a **costume contest**, a **musical with Team Lizzie Inc, Nutty Scientists**, **inflatables**, lots of **sugary treats, raffles**, and more. **Register your friends and cousins too**—let's make it a **family event**! **Limited slots available, so sign up soon!**

To register just click the link:

<https://forms.gle/X2nbryyqbxhdvpu36>

Blood Donation Drive



SOUTHVILLE INTERNATIONAL SCHOOL AND COLLEGES
celebrating its 34TH FOUNDATION YEAR in cooperation with the
Southville for Others (SFO), SISC Medical Team, SISC - Red Cross Youth Organization
and The Philippine Red Cross - Muntinlupa Chapter

BLOOD DONATION DRIVE

Blood is the
RED GOLD
When it saves life

October 10, 2024
Thursday
Lux Hall
10:00 AM - 04:00 PM

Monarchs save lives.
BE GLOBAL. BE AMAZING. BE SOUTHVILLE.

Southville International School and Colleges (SISC) is hosting a **Blood Donation Drive** on **October 10, 2024**, from **10:00 AM to 4:00 PM** at **Lux Hall**. This life-saving event is part of the school's **34th Foundation Year** celebration and is organized in collaboration with **Southville for Others (SFO)**, the **SISC Medical Team**, the **SISC Red Cross Youth Organization**, and the **Philippine Red Cross - Muntinlupa Chapter**.

The event highlights the theme **"Blood is the Red Gold,"** emphasizing the invaluable contribution of blood donations in **saving lives**. **Students, faculty, and community members** are **encouraged to participate** and **make a difference by donating blood**. Together, the Southville community is committed to being **global citizens** through **impactful actions** that save lives.

"Monarchs save lives. Be global. Be amazing. Be Southville!"

Social-Emotional Learning (SEL) Corner

THE VALUE OF CULTURAL COMPETENCY FOR YOUR CHILD

★ THE BASICS OF CULTURAL COMPETENCY ★

Cultural competency essentially means being aware, accepting, and respectful of cultural differences. It's important to recognize that a person's cultural background shapes their beliefs, impacting their thoughts, emotions, and behavior. They can communicate well with individuals from diverse cultural backgrounds, preventing misunderstandings and promoting peaceful relationships.

IN TODAY'S DIVERSE CLASSROOMS

Classrooms today, with an ever-growing and varied population, mirror a blend of different cultures. Children who are culturally competent can work more effectively with peers from diverse backgrounds, fostering an inclusive and respectful learning atmosphere.



IN THEIR FUTURE CAREERS



As economies around the globe become more interconnected, companies are placing a high value on cultural competency as a desirable skill. Employees who are able to navigate cultural diversity have an advantage, allowing them to develop better connections.



IN THEIR PERSONAL GROWTH AND RELATIONSHIPS

Cultural competency promotes empathy, inclusivity, and inquisitiveness. Children who cultivate this skill tend to be more open-minded, compassionate people who value diversity and show respect to others. This goes beyond school, influencing their personal relationships and general perspective on life for the better.



Please acknowledge that you received the e-bulletin. Acknowledgment of this email won't require you to submit reply slips. Kindly scan the **QR code** to the right or click the **link** below:

[*Acknowledgement Form*](#)

Marie Vic F. Suarez, PhD
Principal, K12 and IB

K12 and IB Bulletins

NURTURING the 5Cs through

Academic Rigor, with GRIT and a

GROWTH MINDSET

STAR Campus

136 Elizalde St., BF Homes,
Parañaque City, Philippines
Tel. Nos. 88428811

Munich Campus

Munich St. corner Tropical Avenue,
B.F. Homes International, Las Piñas City
Tel. Nos.: 8825-6374 Loc 208

Luxembourg Campus

1281 Tropical Ave. Cor. Luxembourg St.,
BF International, Las Pinas City, Philippines
Tel. Nos. 8825-6374 Loc 100 / 327

BE GLOBAL. BE AMAZING. BE SOUTHVILLE

www.southville.edu.ph



Obesity Prevention Awareness Week

OBSESITY is a complex health condition characterized by excessive body fat accumulation that can negatively impact overall health. It's often assessed using the Body Mass Index (BMI), which calculates weight in relation to height. A BMI of 30 or above is generally classified as obese.

Causes and Contributing Factors



Family history/
Genetics



Unhealthy diet



Sedentary lifestyle



Increasing age



Poor sleep quality



Existing medical
Conditions



Medication
side effects



Stress/
Emotional factors



Pregnancy

Prevention and Treatment



- Monitor your **Body Mass Index (BMI)** regularly.
- Cutting calories and **eating a balanced and healthy diet** are essential for tackling obesity.
- Aim for **at least 150 minutes of moderate-intensity physical activity** each week.
- **Consulting a mental health professional** can be helpful in tackling emotional and behavioral challenges related to eating.
- Stay committed to your **healthy weight plan** throughout the week, on weekends, and during vacations and holidays.

BMI Formula

Imperial System:

$$\text{BMI} = 703 \times \frac{\text{Weight (in pounds)}}{\text{Height}^2 \text{ (in inches)}}$$

Metric System:

$$\text{BMI} = \frac{\text{Weight (in kilograms)}}{\text{Height}^2 \text{ (in meters)}}$$



WHO Classification of Weight Status

Weight Status	Body Mass Index (BMI), kg/m ²
Underweight	<18.5
Normal Range	18.5 – 24.9
Overweight	25 – 29.9
Obese	>30
Obese Class I	30 – 34.9
Obese Class II	35 – 39.9
Obese Class III	40 and above



**Eat Wisely and
Be Actively Healthy.**



- Reference:
- World Health Organization (WHO)
 - American Heart Association (AHA)
 - Mayo Clinic

